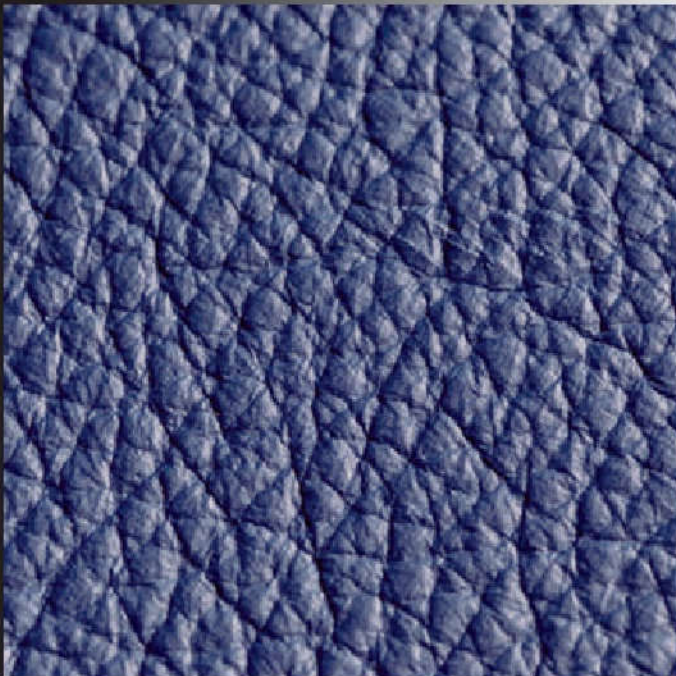




# Möbelleder *Upholstery Leather*



## Standard

- | pflegeleicht, verschnittgünstig
- | *easy-care, little offcuts*

# Standard

Technische Werte/ <i>technical specifications</i>	Meßmethode/ <i>test methods</i>	Werte/ <i>values</i>
Dicke/ <i>thickness</i>		0,9 mm - 1,1 mm
Reibechtheit/ <i>rub fastness</i> trocken/ <i>dry</i> nass/ <i>wet</i> pH = 8	DIN EN ISO 11640	500 Hübe/≥ 4 250 Hübe/≥ 3 80 Hübe/≥ 3
Dauerknickverhalten/ <i>flexion</i> 50.000 Knickungen/ <i>flexes</i>	DIN EN ISO 5402	Keine Beschädigung/ <i>no damage</i>
Weiterreißkraft/ <i>tear strength</i>	DIN EN ISO 3377-1	≥ 20 N/mm
Haftung der Zurichtung/ <i>adhesion of finish</i>	DIN EN ISO 11644	≥ 2 N/cm
Lichtechtheit/ <i>light fastness</i>	DIN EN ISO 105-B02	≥ 4 blue scale
Brennprüfung/ <i>flammability</i>	DIN EN 1021 1+2	OK
Narben/ <i>grain</i>	korrigiert/ <i>corrected</i>	OK
Hautgröße circa/ <i>average size</i>		5 qm/sqm
Lieferung ab circa/ <i>minimum delivery</i>		2,5 qm/sqm



2612 weiß



2619 elfenbein hell



2741 ocker



2618 perlweiß



2726 cream



2732 jaffa



2621 ecru



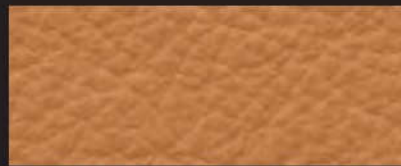
2728 beige



2733 korallenrot



2727 sandbeige



2740 natur



2734 perlorange



2620 sand



2742 lehm



2606 feuerrot



2729 pergament



2743 signalbraun



2737 rubin



2730 beigegrau



2731 terrabraun



2607 himbeer

imprägniert, korrigiert, leicht g



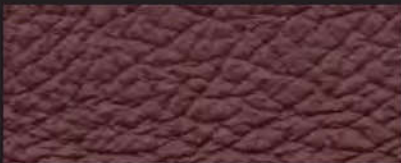
2626 hellrosa



2735 ziegel



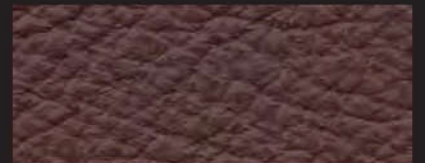
2745 hirschbraun



2608 brombeer



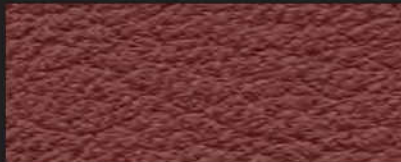
2744 kupfer



2611 kakao



2736 bordo



2625 terracotta



2603 schoko



Kollektionsmuster sind keine Urmuster. Kleine Farbabweichungen sind möglich.  
*Swatches are no master samples. Small differences may occur.*

# Standard

t geprägt, Stärke 1,0 bis 1,3 mm / *impregnated, slightly, embossed, corrected grain, strength 1,0 to 1,3 mm*



**2610** smaragd



**2624** hellblau



**2627** pastellblau



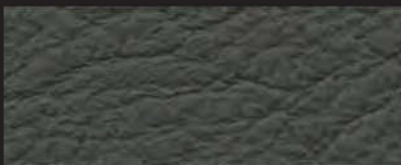
**2739** blaugrün



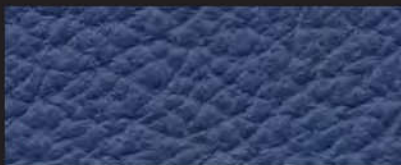
**2623** violettblau



**2605** hellgrau



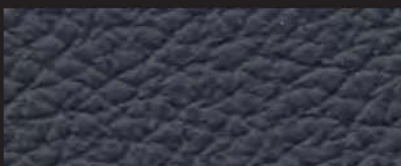
**2602** dunkelgrün



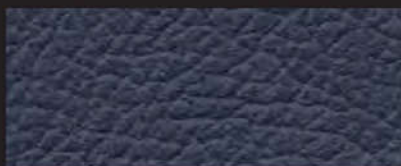
**2622** ultramarinblau



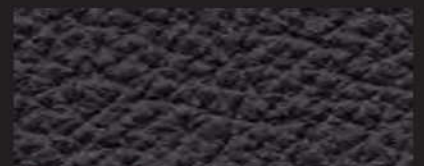
**2738** schiefergrau



**2609** marine



**2604** ozean



**2601** schwarz



Hans Reinke  
Handelsgesellschaft mbH

Brandstücken 20      Tel. +49 40 39 10 68-0  
22549 Hamburg      Fax +49 40 39 10 68-29  
info@hans-reinke.com      www.hans-reinke.com

HOLLAND, BELGIUM & LUXEMBOURG



Hans Reinke Benelux B.V.

D'n Oliëpint 2      Tel. +31 13 505 67 02  
5081 NT Hilvarenbeek      Fax +31 13 505 30 73  
Netherlands      info@hans-reinke.nl

SWITZERLAND & AUSTRIA



Jörg & Reinke GmbH

Bahnhofstrasse 42      Tel. +41 34 402 50 05  
CH-6162      Fax +41 34 402 55 53  
Entlebuch      info@joerg-leder.ch

POLAND



Automotive Textiles

Jakub Ponczyński      Tel. +48 42 288 10 10  
93-490 Łódź      Mob. +48 513 014 610  
Pabianicka 119/131      jakub@ponczynski.com